



EDUVENTURES

Learning Collaborative
Schools of Education

Custom Inquiry Report

Background

Eduventures has access to data collected from schools of education via the American Association of Colleges of Teacher Education's (AACTE) annual Professional Education Data System (PEDS) data collection effort. This annual collection effort gathers information such as enrollment data, student and faculty characteristics, faculty productivity, and operational ratios. William Paterson University of New Jersey requested an overview of the responses of schools of education in New Jersey related to student and faculty diversity versus their own responses.

What follows is an overview of the aggregate responses of the 10 institutions in New Jersey that participated in the most recent data collection year, 2006. This data is self reported and reflects the information provided by participating institutions. Data collected in 2006 reflects the academic year 2004-2005. These data provide some helpful preliminary benchmarks for consideration, and illustrate the benchmark information that can be provided via this data set. Additional analyses and segmentation can be provided upon request.

In addition to William Paterson University of New Jersey, the institutions from New Jersey that participated in this data collection effort include:

- Georgian Court University
- Kean University
- Monmouth University
- Montclair State University
- New Jersey City University
- Rider University
- Rowan University
- Seton Hall University
- The College of New Jersey

Findings

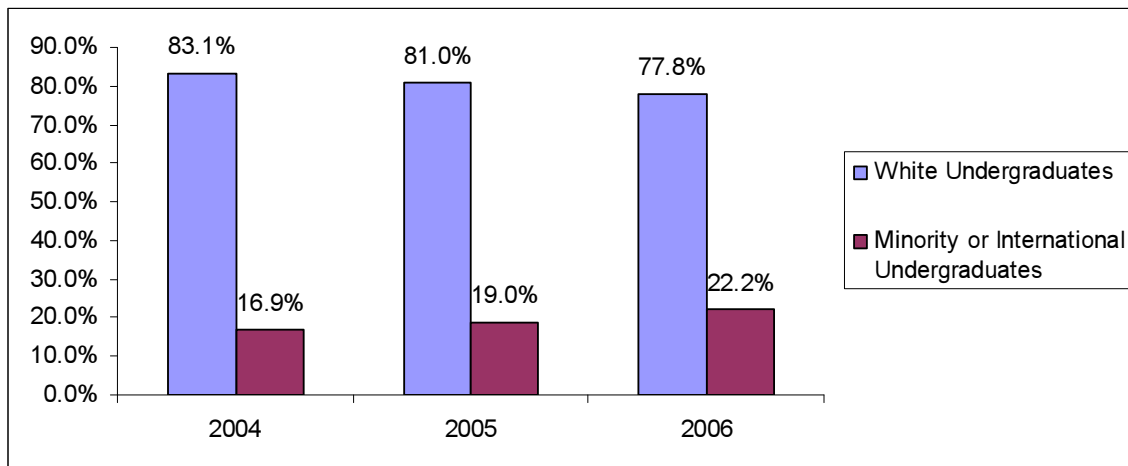
William Paterson University of New Jersey (WPUNJ) has reported a slightly higher than average percent of minority or international faculty than peers during the period, with the exception of 2005. The largest racial/ethnic group at WPUNJ, after White, non-Hispanic is Black, non-Hispanic. The percent of faculty reported in this category has increased over the period and is significantly higher than the peer group.

Your Institution Faculty vs. Peer Group – By Detailed Racial/Ethnic Group

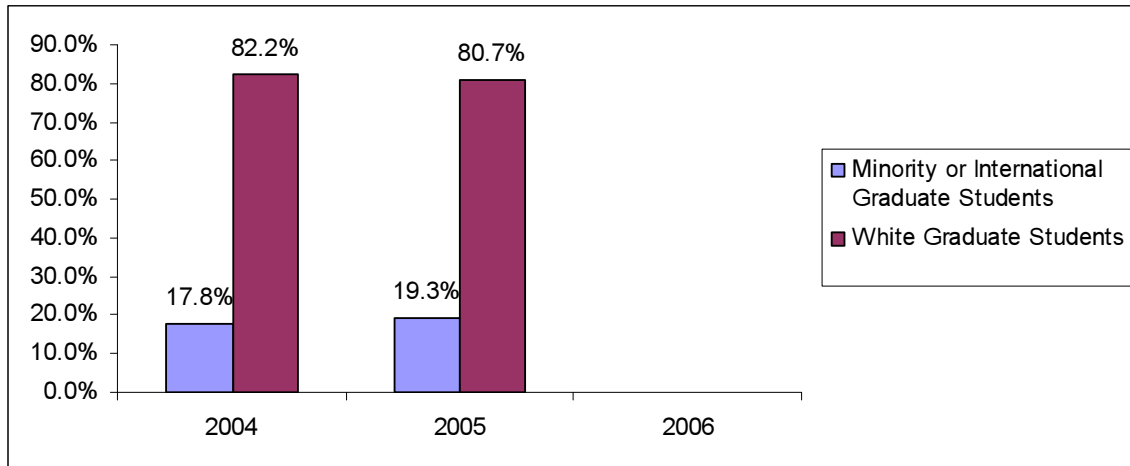
	White, Non-Hispanic	Black Non-Hispanic	American Indian	Asian	Hispanic	Non-Resident Alien	Unknown
2004							
<i>William Paterson</i>	70.3%	6.9%	0.0%	1.1%	1.7%	0.0%	20.0%
Mean	80.1%	9.1%	0.1%	1.6%	4.4%	0.5%	4.1%
Median	78.7%	9.8%	0.0%	1.3%	5.8%	0.0%	0.0%
2005							
<i>William Paterson</i>	84.2%	10.5%	0.0%	2.1%	3.2%	0.0%	0.0%
Mean	78.0%	5.7%	0.1%	2.7%	3.0%	0.3%	10.2%
Median	84.5%	4.0%	0.0%	2.0%	2.5%	0.0%	4.4%
2006							
<i>William Paterson</i>	74.3%	17.1%	0.0%	8.6%	0.0%	0.0%	0.0%
Mean	78.9%	6.1%	0.1%	1.9%	3.3%	0.5%	9.3%
Median	80.0%	4.9%	0.0%	1.2%	3.4%	0.0%	5.5%

A review of the student population by ethnic/racial diversity demonstrates that the student population has become increasingly more diverse over the three year reporting period – both at the graduate and undergraduate level.

Your Institution Undergraduate Students - By Racial/Ethnic Group



Your Institution Faculty vs. Peer Group – By Racial/Ethnic Group



However, relative to peer institutions in New Jersey overall, WPUNJ reports higher percentages of non-minority students, at both the graduate and undergraduate level.

Your Institution Students vs. Peer Group – By Racial/Ethnic Group

	White, Non-Hispanic Undergraduates	Minority or International Undergraduates	White, Non-Hispanic Graduate Students	Minority Graduate Students
2004				
<i>William Paterson</i>	83.1%	16.9%	82.2%	17.8%
Mean	71.3%	28.7%	73.7%	26.3%
Median	74.6%	25.4%	74.4%	25.6%
2005				
<i>William Paterson</i>	81.0%	19.0%	80.7%	19.3%
Mean	75.3%	24.7%	73.6%	26.4%
Median	81.7%	18.3%	78.5%	21.5%
2006				
<i>William Paterson</i>	77.8%	22.2%	NA	NA
Mean	72.9%	27.1%	69.8%	30.2%
Median	76.8%	23.2%	71.9%	28.1%

William Paterson College of New Jersey versus Selected New Jersey Peers

Also of interest to WPUNJ is the comparison of their racial diversity to two specific peers, Montclair State University and Kean University. The following analysis compares WPUNJ to the average of these two institutions.

WPUNJ reports a higher percentage of non-minority faculty than these two peer institutions over the period. However, during the most recent year, William Paterson reports 17.1% black, non-Hispanic faculty, and 8.6% Asian faculty, significantly more than the two peers.

Your Institution Faculty vs. Peer Group – By Detailed Racial/Ethnic Group

	White	Black, Non-Hispanic	American Indian	Asian	Hispanic	Non-resident Alien	Unknown
2004							
<i>William Paterson</i>	70.3%	6.9%	0.0%	1.1%	1.7%	0.0%	20.0%
Mean	77.0%	11.3%	0.3%	1.4%	6.8%	1.3%	1.9%
2005							
<i>William Paterson</i>	84.2%	10.5%	0.0%	2.1%	3.2%	0.0%	0.0%
Mean	77.1%	10.0%	0.5%	1.8%	6.5%	1.5%	2.6%
2006							
<i>William Paterson</i>	74.3%	17.1%	0.0%	8.6%	0.0%	0.0%	0.0%
Mean	64.1%	11.1%	0.0%	1.0%	6.0%	1.2%	16.6%

WPUNJ reports a higher percentage of non-minority undergraduate students than these two peer institutions over the period.

Your Institution Undergraduate Students vs. Peer Group – By Detailed Racial/Ethnic Group

	White	Black Non-Hispanic	American Indian	Asian	Hispanic	Resident Alien	Unknown
2004							
<i>William Paterson</i>	83.1%	3.7%	0.1%	2.2%	8.3%	0.1%	2.4%
Mean	71.0%	8.4%	0.1%	2.5%	14.4%	0.2%	3.4%
2005							
<i>William Paterson</i>	81.0%	5.0%	0.3%	1.9%	9.6%	0.3%	1.9%
Mean	69.0%	8.5%	0.2%	2.6%	14.2%	0.7%	4.9%
2006							
<i>William Paterson</i>	77.8%	6.1%	0.4%	2.5%	9.8%	0.0%	3.5%
Mean	65.4%	9.3%	0.2%	3.1%	15.0%	0.9%	6.3%

WPUNJ reports a higher percentage of non-minority graduate students than these two peer institutions over the period.

Your Institution Graduate Students vs. Peer Group – By Detailed Racial/Ethnic Group

	White	Black Non- Hispanic	American Indian	Asian	Hispanic	Resident Alien	Unknown
2004							
<i>William Paterson</i>	82.2%	2.5%	0.1%	2.2%	6.0%	0.0%	7.0%
Mean	73.4%	10.8%	0.0%	2.5%	6.7%	0.4%	6.2%
2005							
<i>William Paterson</i>	80.7%	3.2%	0.3%	1.6%	6.0%	0.1%	8.1%
Mean	74.1%	10.1%	0.1%	2.4%	7.2%	0.8%	5.4%

*Note: WPUNJ 2006 data not reported