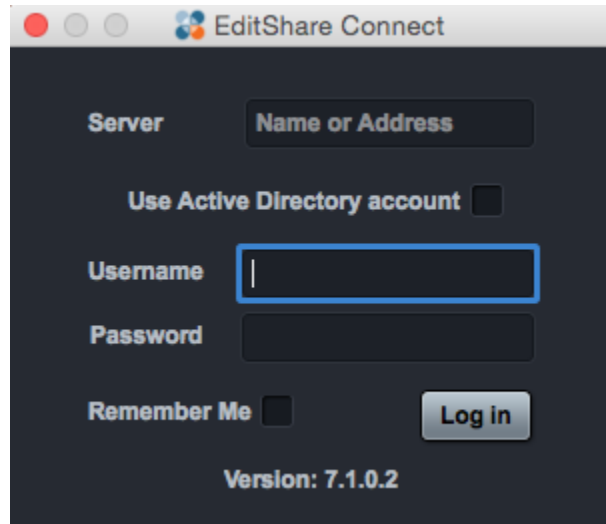


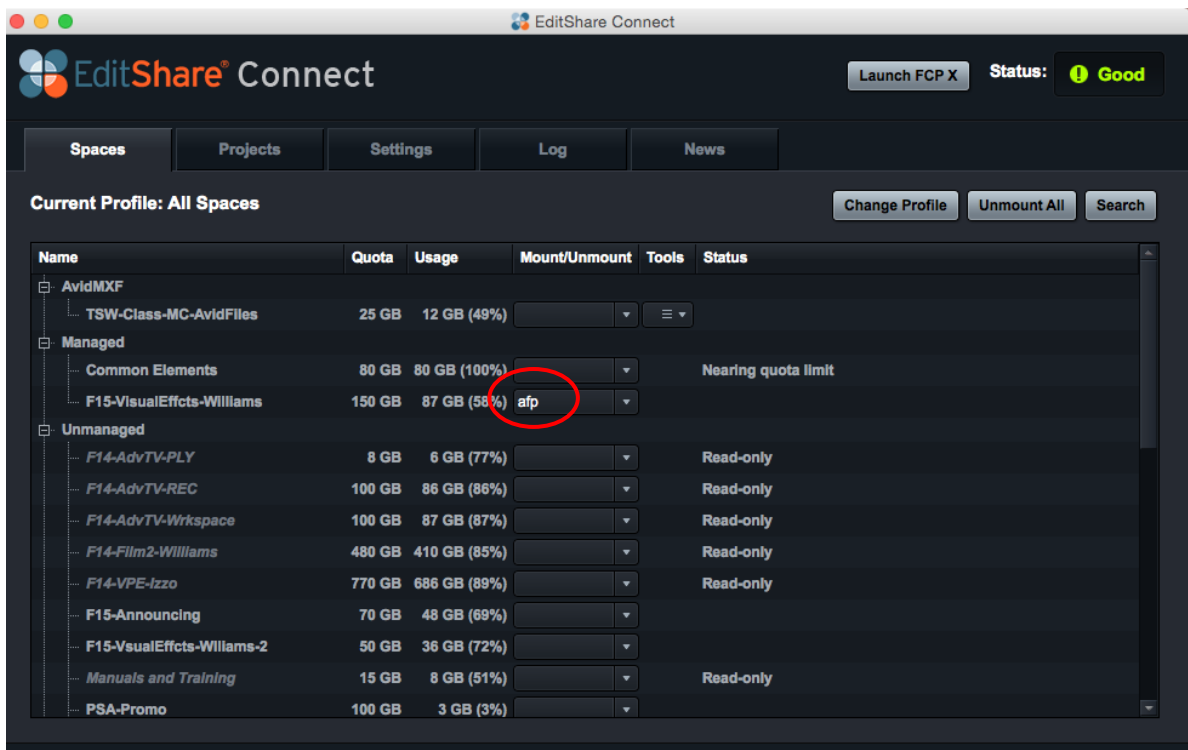
1. Click on the EditShare Connect icon on your dock.



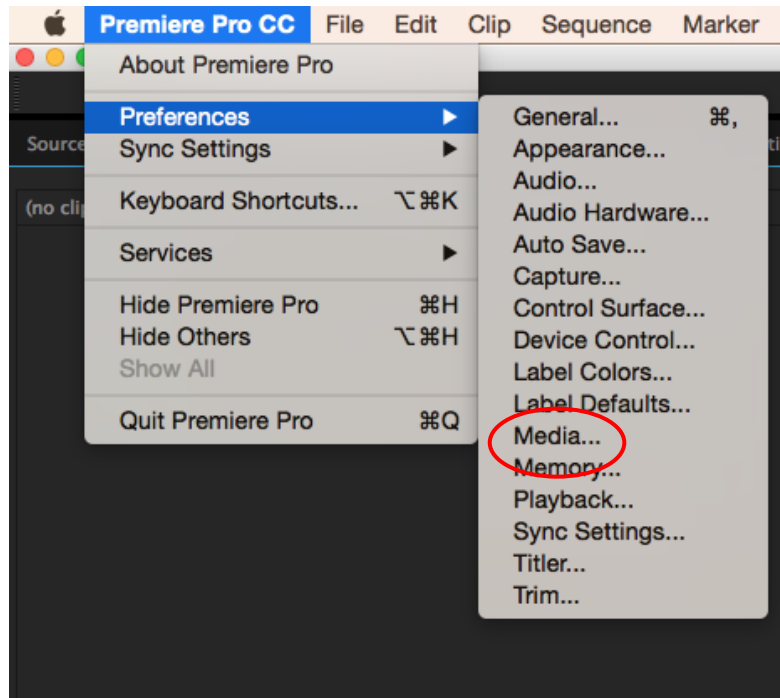
2. Login to EditShare using your "fcp" login and 855



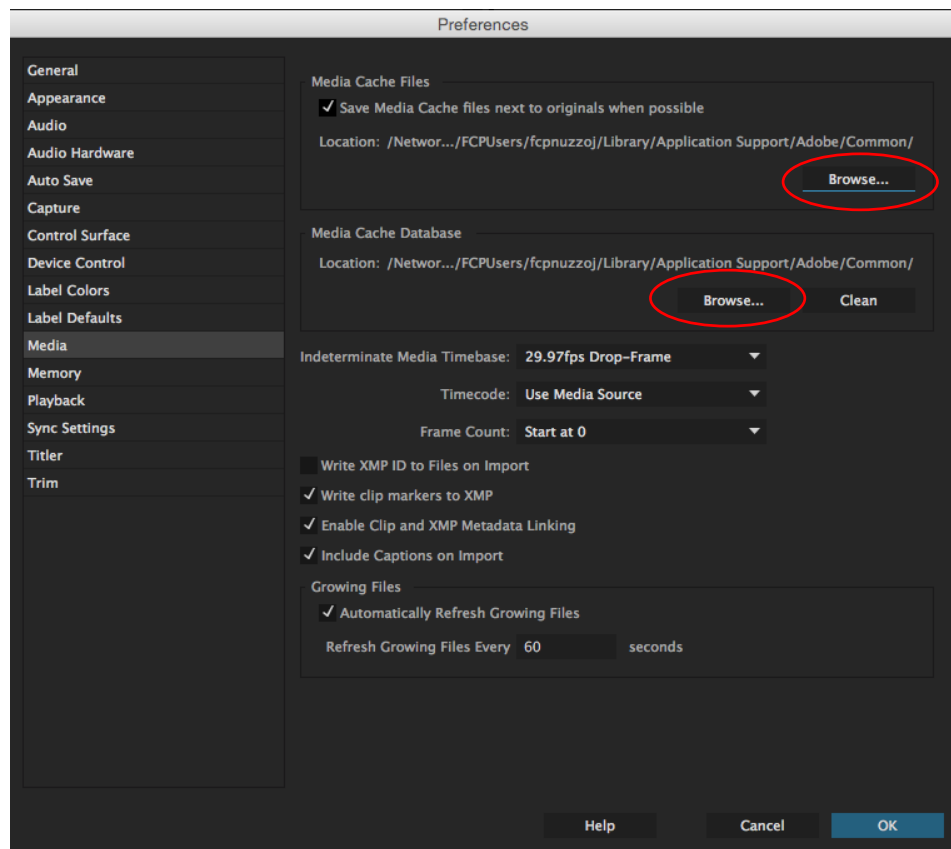
3. Mount your class drive and then open Adobe Premiere



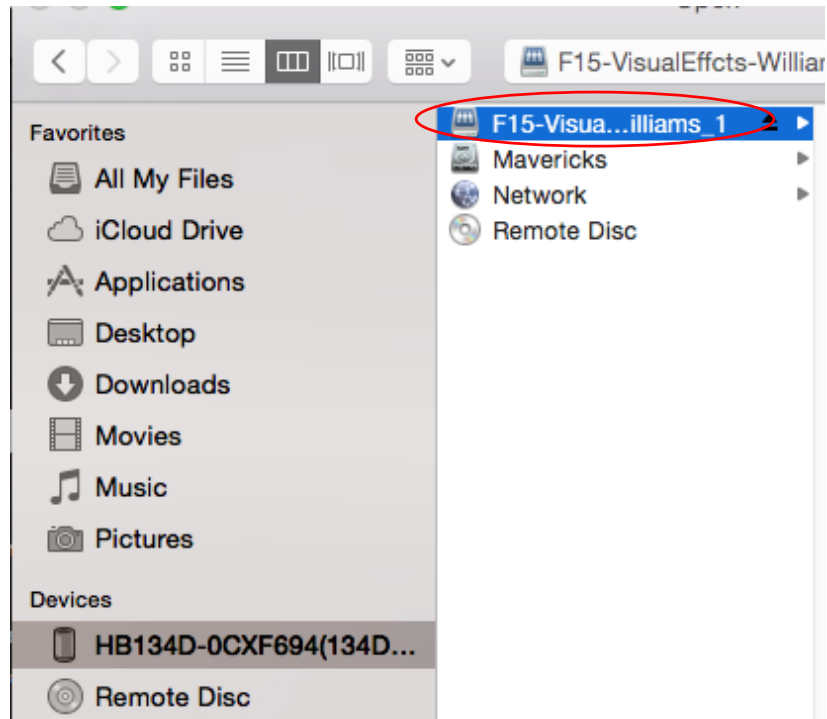
4. Go to Premiere Pro>Preferences>Media



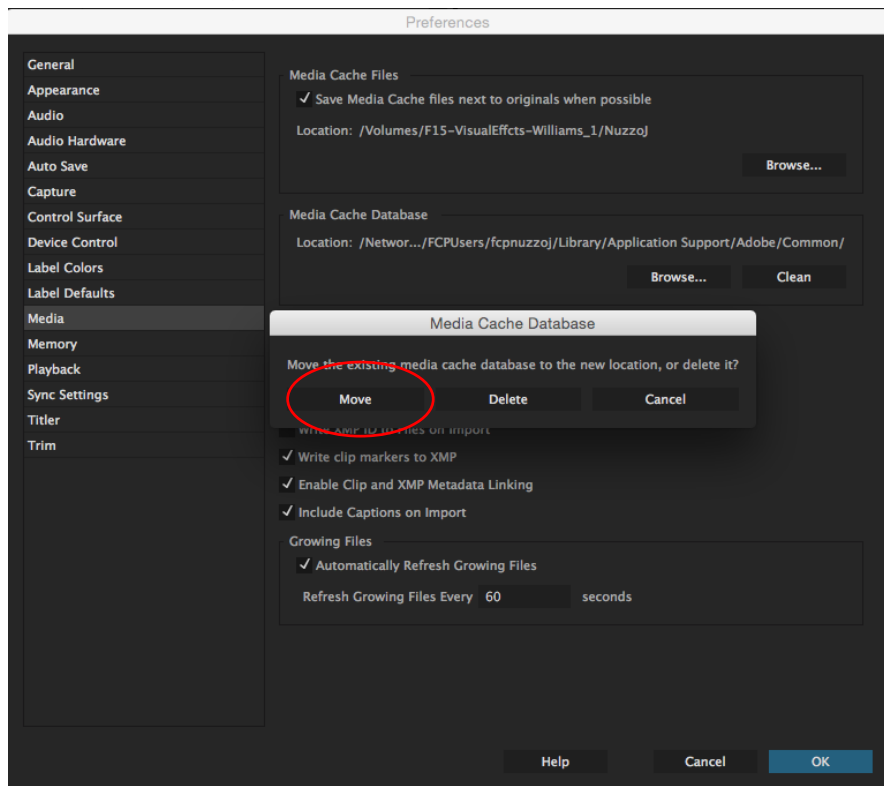
5. Under “Media Cache Files “and “Media Cache Database,” click “Browse...” to change where the media cache will save.



6. Navigate to your project folder on your classes Editshare space and click “Choose”



7. If prompted with this window, choose “Move”



8. Notice the file directory is now set to your class drive and in your project folder. Click “OK” and you are ready to edit.

